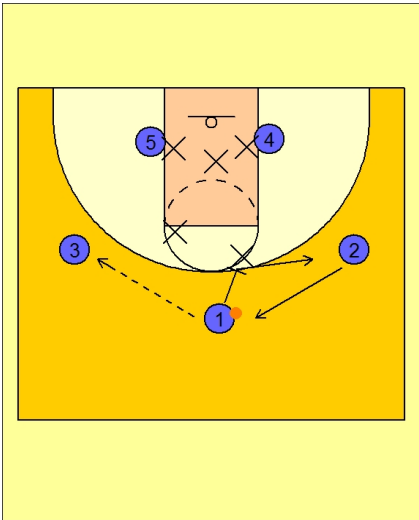
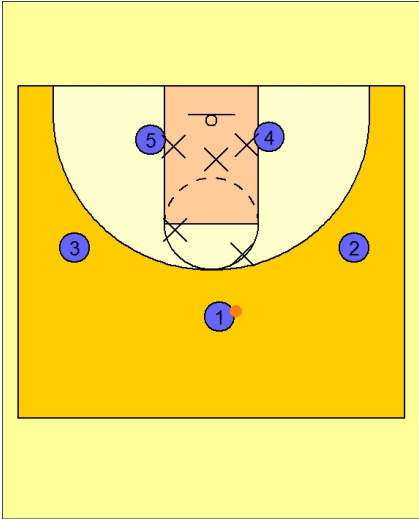


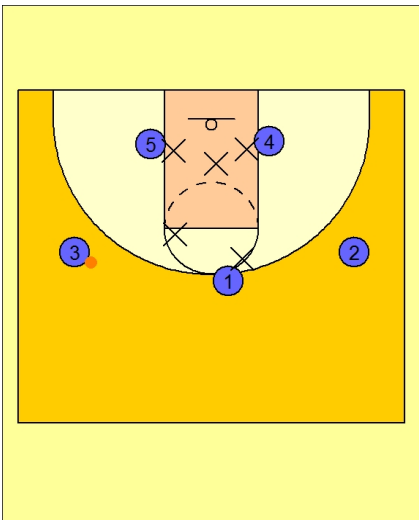


Kansas

Basic set vs. 2-3 zone.

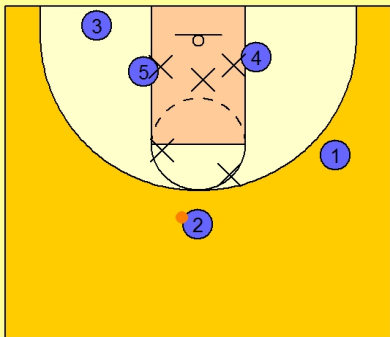
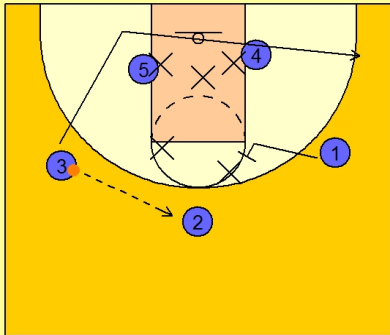


1 passes to 3.
1 walks in on top defender then goes to wing
2 rotates to the top
5 posts up hard

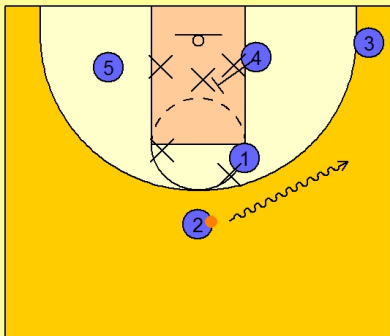




3 passes back to 2 then cuts baseline
1 sets back screen on top defender AFTER 2 gets ball.



2 dribbles to the right wing
3 calls for ball
5 pops out a little and calls for ball
4 'releases' defender and posts next level





2 passes to 4 or 3 depending on bottom defender

