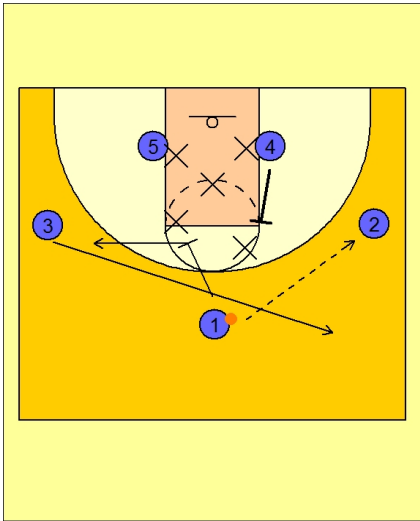
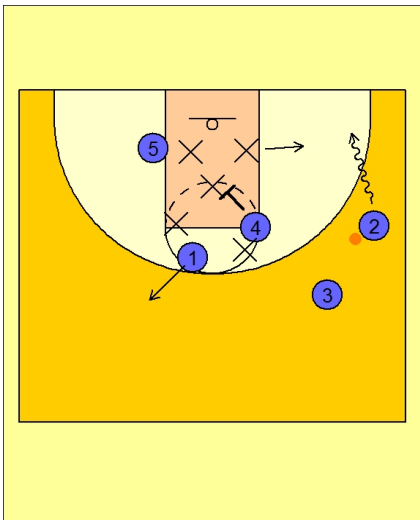




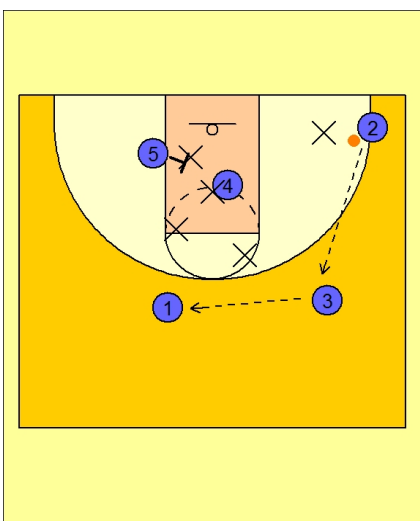
Missouri



1 passes to 2
1 walks in on top defender
3 goes to right top side
4 sets screen on top defender
5 remains on backside ready to 'walk in'



2 dribbles to corner forcing bottom defender to come out
4 goes next level and posts middle
2 looks to 4 if not there pass to 3



2 reverses ball to 3 then to 1. spacing is key here to prevent deflection or steal
5 walks in on bottom defender
1 looks at 5 but may have to dribble baseline for better passing angle.

